

Works Courtesy of Members of NC

North Carolina Woodturners Association

North Carolina WOODTURNERS

Journal of the North Carolina Woodturners Association

A Chapter of the American Association of Woodturners

Volume 27, No. 11

Website: www.ncwoodturners.com



President's Message

Newsletter 11 of 24

Wow, what a busy weekend. **THANK YOU TO ALL WHO HELPED AND SUPPORTED OUR CLUB AT EXTRAZANGZA.** There were lots of smiling faces after visitors to our booth turn their pens. I would say a great time was had by all.

This coming weekend is the NC woodturners symposium in Greensboro; would like to see you all there.

Don't forget our annual Christmas party coming up for our December meeting, and our next meeting will be a turn and learn for the newer turners.

Remember to turn your club challenge items and bring a turning for the gallery to showcase your handy work.

Stay safe and turn something useful. See you the second Saturday in November at the woodworking shop.

TIM



Nov. 5, 2017

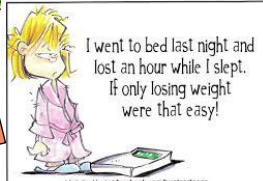


Table of Contents

President's Message	1
2017 Presenters/Topics	1
2017 Challenge Projects	2
October Meeting – Bob Baucom	2
September Meeting – Double Whammy	3
Membership/Newsletter/Library News	4
Mentorship Information	5
Challenge Project – Miniatures	6
Gallery	7
2017 Officers and Board of Directors	10



The AAW is dedicated to the advancement of woodturning by providing education, information, organization, technical assistance, and publications relating to woodturning. The North Carolina Woodturners Association purpose is to promote an interest in woodturning for persons of all levels, and to encourage membership in, and give support to, the American Association of Woodturners.

2017 Presenters/Topics

	Presenter	Topic / Demonstration
January	Sam McDowell	Design and Structural Problems
February	Scarlette Rouse	Three-winged box
March	Tom Denne	Segmenting – the ‘mystery’ revealed (Tom’s method)
April	Ric Erkes	Tips and Tricks (should be very enlightening).
May	Bob Moffett	Turning a wide rim bowl and using Lichtenberg Fractal woodburner on the rim. Will also show how to make the woodburner
June	Jerry Measimer	Finishing and texturing
July	Learn ‘N Turn and “sell” of tools, etc.	Chance to help others improve their skills; everyone wanting to sell will pay \$10/table
August	Michael McNeilly	Finals (and spirals), segmented Christmas ornaments; bird house ornaments
September	Scott Caskey Beth Parham	AM – Turning/Sharpening – various methods PM – Pyrography – beginning information and more
October	Bob Baucom	AM - Lantern ornament turning PM - turning small bowl with “Ride the Rainbow” cut and texturing in afternoon
November	Tony Bradley Any member can help	Fluting and beading Learn & Turn – after demonstration
December	CHRISTMAS PARTY @ Market on Main, Hickory, NC	

2017 Challenge Projects

Project		Description & references
Jan	Trembleur	h 63
Feb	Spheres	h 71
Mar	Eggs	h 85
April	Natural edge Mushrooms	h 84
May	Square edged bowls/platters	h h
June	Non-kit Letter openers	h 92
July	Acrylics	T h
Aug	Copy it. (no bowls)	C
Sept	Miniatures	h 52
Oct	Boxes	h 3
Nov	Fruit	h 9
Dec	Ornament Swap	Bring one to party if your spouse wants to participate in the annual swap.



October Meeting – Bob Baucom



October’s meeting was Bob Baucom joining us again. Bob demonstrated his lantern ornament turning in the morning and turning small bowl with “Ride the Rainbow” cut and texturing in afternoon. I did not get to fully enjoy the morning demonstration due to secretary duties but did get to watch the afternoon presentation more.

The morning was showing and teaching us how to turn a lantern ornament which involves “turning air”. He uses a 2” x 2” x 6” blank and can be turned with or without a flame/bird in the opening. It looks most striking with using contrasting wood for flame and finial, and he

likes to use laminated blanks. He shared this process with us as well with a variety of options to achieve this. He provided a handout that contained the measurements and step-by-step process to achieve this ornament. Design opportunities are vast with making this style of ornament – from wood selection, to finial and roof designs, to number of holes you design in your piece and whether to include bird/flame/open center in your piece.

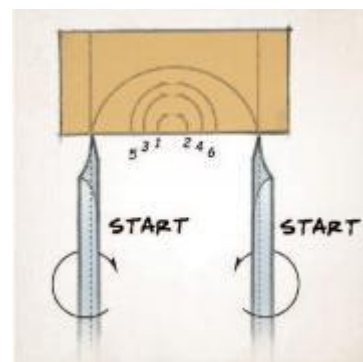
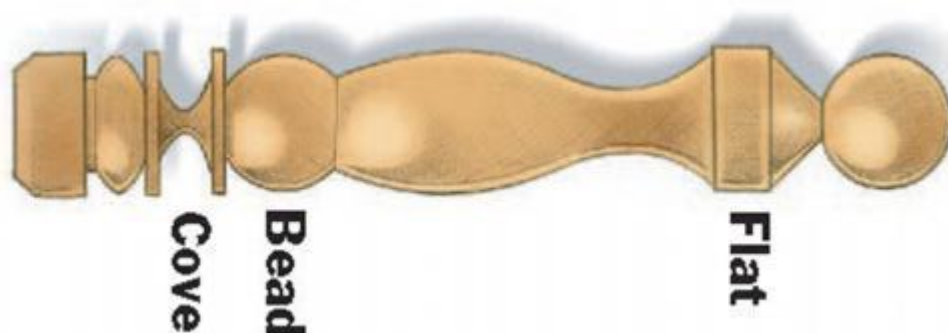
In the afternoon, Bob turned a small bowl and described types of bowl gouges and different cuts. Then he got into his “riding the rainbow”. Andy Gunning ‘introduced’ it to Bob; “riding the rainbow” can be traced back to “the Trades” in England and has been taught to students by turners like Alan Battey.



“The cut is made in one smooth movement from beginning to end. The turner will be moving his/her body and the tool in a full range of motion. To get the full benefit of this cut, use a ‘U’ shaped bowl gouge. This cut is made starting as any bowl hollowing cut - from the inside center of the bowl. At the beginning of the cut, the flute is closed and a ‘step’ is turned about a sixteenth of an inch. This step is so the bowl gouge has a starting point that will prevent back cutting/backward sliding of the gouge. This part of the cut has the turner leaning to the right over the ways of the lathe with the tool handle nearly level pointing away from the turner. *Note: The wider the bowl the more the turner may need to lean over and the farther the tool handle will point away from their body.* Without taking the gouge off the wood and keeping the bevel on the wood, move the gouge around the curve of the shape of the bowl. While the bevel is rubbing (riding the bevel), swing the handle of the gouge down and towards the body. *Note: As the gouge handle moves downward and around toward the body the cutting edge is doing the opposite. The tool’s cutting edge will be moving in an upward arc or rainbow.* In order to stay on the bevel, the flute of the gouge will start at the ‘step’ in the closed position. As the tool moves in an arc or rainbow, the flute will gradually open and as the cut is finishing and passes over the center of the bowl, the flute will be fully open. With a ‘U’ shaped flute and a traditional grind the gouge can rider the bevel throughout the cut from beginning to end with less tear-out and less sanding. The use of this cut is most appreciated when making final light finishing cuts on the inside of a bowl.” [This is an excerpt from Bob’s handout on “Turning a Small Bowl”].

November Meeting – “Beads & Coves” plus “Learn ‘N Turn”

Tony Bradley, one of our organization’s founding members and our first president, will be sharing turning coves and beads. Following his demonstration, members will be available to assist new and learning turners with hands’ on assistance with several lathes available. Members that can “mentor” please plan to be here and help those of us that are learning and wanting to improve our skills so that this art form continues to grow and be shared with others. It does not require massive teaching skills, just friendly assistance to novice turners.



For Sale

Erich Hupka was visiting with us in October (and hopefully will be joining our happy bunch!) and has a Craftsman 10" Contractor's Table Saw for sale. It is ¾ hp with upgrade fence with router table insert sitting on a 6-drawer roller cart. Erich is from Mount Holly and you can contact Erich by phone for more information at (402) 632-8790.

Membership/Newsletter/Library News

By Beth Parham

LIBRARY

Books are \$.50 per month and DVDs are \$1.00 per month. You may check out multiples. We are working on an electronic version as well as a paper version of the library offerings to have available. The electronic will be sent to all those that get email newsletters. Feel free to print out at home if you want to mark what you have checked out and/or want to check out. The less I must print out, the cheaper it is for the club's funds.

Some DVDs have been found that don't play well or even maybe missing. If you find something wrong with anything when you have them checked out, please be sure to let Guy or I know. Please check

in and out materials at the beginning of the. That will make things so much simpler for everyone.

As always, let me know if there are any new DVDs or books that you may be aware of that would be an asset to the library.



MEMBERSHIP MATTERS

Types of Membership and annual pricing. See me at meetings if you want to join or have questions regarding membership. Also, remember that membership entitles you to a 10% discount from Klingspor on all purchases (except wood and things with a plug).

Membership

❖ Regular

▪ \$50/year –

○ The following prorated price for yearly membership applies to *new* members.

▪ After April 1st - \$45.00;

▪ After July 1st - \$40.00;

○ After October 1st - \$55.00, which includes the following year

○ *If you do not renew by March 1st of any year, you must pay the full \$50 membership to "rejoin" in the calendar year per the by-laws*

❖ Centurion \$100/year (paid to NCW Education Fund. Includes special nametag.)

❖ Lifetime \$600 one time paid to NCW Education Fund. Includes membership for life and special name tag

❖ Benefactor \$1,000 one-time paid to NCW Education Fund. Includes honorary membership in NCW (designed for businesses)

WEBSITE/ON-LINE

I am gradually updating the website – quite an ongoing and major ordeal. Please let me know how you feel about the changes I'm incorporating. – <http://www.ncwoodturners.com/>. I want to generate an online gallery that will "slideshow" challenge and especially gallery items each month. Other suggestions you'd like included in our website would be welcomed.

NEWSLETTER

If there are topics you'd like included in the newsletter, please let me know. I tend to put "new turner" information in because that's where I feel I am and information that helps me. But this is *your* newsletter and I want to incorporate what you want in it. Again, if you are getting the newsletter via mail and get an email, be sure to let me know of the email address. The electronic version is faster and in full color.



MEMBERSHIP DIRECTORY

Membership directory were distributed at the October meeting. (It will be printed in black and white; there will be no photos in this version.) I will have more copies available for those that may not have been present at that meeting. Will NOT be reprinted for everyone to have a new updated list. Keeping our expenses down where we can.

UPDATE/CORRECTIONS:

- Phone for Pam Dergins 828-443-0469
- Phone for Barry Sain 828-308-1929
- Phone for Tim Simmons 828-212-1605
- New member: Connie Preiser Information will be at November meeting:

2017 – Symposium in Greensboro

Go to the website, <http://www.northcarolinawoodturning.com/> for details on presenters and schedule for the Symposium to be held in Greensboro, NC, November 3-5, 2017. Members are needed to "man" the NC Woodturners room and run the camera. Contact Ric Erkes or Sam McDowell for specifics and scheduling your time.



Upcoming Office/Director Needs

By Beth Parham

At this point, the Board has a slate of proposed officers to present to the club at the November meeting, with voting to be at the Christmas luncheon. There are two board members rotating off, Vice President; we have individuals for these slots. We need one more name – 2nd representative for Symposium – please let any current officer/board member know if this position is a fit for you. Bruce Whipple and I will continue in our slots (treasurer and secretary respectively). Tim Simmons will begin the 2nd year of his two-year term.

Mentorship Information

If you are interested in learning new skills, or improving the skills you have, contact one of these NCW members:

MENTOR & LOCATION	CONTACT #	MENTOR & LOCATION	CONTACT #
Scott Caskey (Iron Station, NC)	704-735-2382	Edgar Ingram (Statesville, NC)	704-876-4576
Don Olsen (Morganton, NC)	704-530-6055	John Melius (Mooresville, NC)	704-995-7257

Please let me know if you wish to add to our group of mentors. We have many very talented turners in our group and I, for one, know I learn best by watching and working with someone that can help me improve and correct my skills. Please consider mentorship. With new and non-turners joining and visiting our club, what a great way to help someone one-on-one and share your passion.

Challenge Project – Boxes



Dorothy Green
Walnut & Maple



Ralph Green
Walnut



Ken Hunt
Mahogany & Ash



Gayle Stone
3 Lidded Boxes



Jeff Campbell
Maple



Ken Minyard



Ken Minyard



Ken Minyard



Scott Caskey

Gallery



Burr Stoker



Burr Stoker



Burr Stoker



Ralph Green



Jeff Campbell



Pam Dergins



Brian Butler



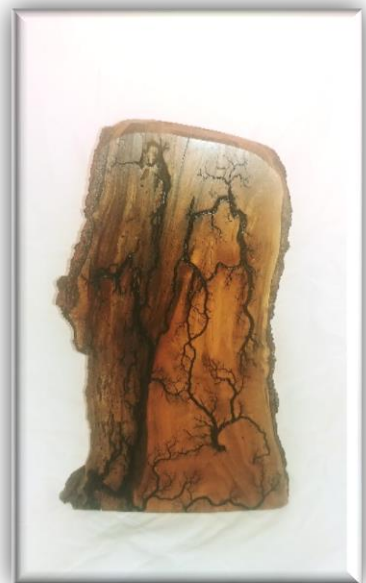
Burr Stoker



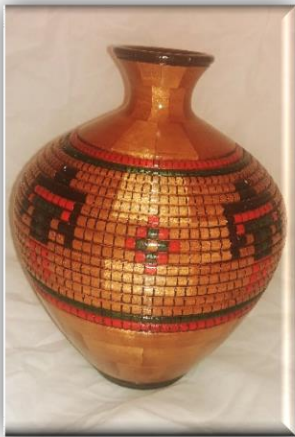
Glenn Weber



Glenn Weber



Glenn Weber



Tom Denne



Don Olsen



Don Olsen



Bruce Whipple

Extravaganza 2017

Thanks to Lycrecia Caskey and Jeff Campbell for grabbing some pictures of our setup and turnings at the Extravaganza October 27 – 28, 2017. There was a very helpful group that worked the two days of the event. Thanks to Scott Caskey and Tim Simmons for organizing and setting up and equipping our booth area. Unfortunately, I had a migraine hit early Friday and was very little if any help this year. Thanks to those that did help. If we had a larger number of our active members (the 40-50 that attend meetings out of 100+ membership), no one would need to work more than 1-2 hours if that long. Great way to share with community about our organization and I know of at least 3 that are coming to meetings with intentions of joining – that information I got in less than 2 hours or so at our booth.

Young and Old – all enjoyed turning their own pens!!!





Booth in full swing

Thanks to Scott, Don and Tim for
“filling” in the demo schedule
since Morris Schlesinger’s illness
and treatment.

GREAT JOB!



Need Your Feedback!!

I have had contact from club members expressing some concerns we **AS A CLUB** need to consider. We have visitors and new members, and some never return or only stay a year or so before “dropping out”. When some of these have been talked to, it “boils down” to the demonstrations are great but “above what I can do” or “I’ll never be able to do that” because they are non-turners or novice. I understand this feeling as I still feel that way sometimes although I know with practice I will get there if I choose.

To assist with gaining and retaining membership, it has been suggested that we utilize the talent within our club more. In the past some have been contacted to present with “I can’t do a whole day” presentation. One thought: have a morning demonstration by our own (saving funds that are always an issue when trying to book bigger names as demonstrators), with hands’ on afternoons with more experienced turners helping newbies and those needing assistance to understand terminology and tools; learn to “ride the bevel” not just hear it said; master basics to feel comfortable with the lathe and tools and wood. Some members only come for the morning session anyway with a large number leaving at lunch. We could bring in some major turners throughout the year for the more advanced turners in the club and the newer members/visitors would have more foundation knowledge to build on while watching them as well.

We would need **PARTICIPATION** by members – both as demonstrators as well as mentors. Everyone can help someone with basics. The presentations may also be multiple turners that feel “proficient” with one tool sharing that information – someone do bowl gouge; skew; parting tool, etc. Again, information new turners need and sometimes just a great refresher for others that have turned longer but may not get as much tool time as they’d like and gain more knowledge from the demonstration.

It has also been suggested that we do a 2nd Saturday afternoon turn; this could be 4th Saturday following Woodcrafters, as they only meet until noon (1/2 day meeting). Again, this would take participation by members to stay and help; newer turners/novices/others wanting help could let us know at the regular monthly meeting of their plan to come on the 4th so we can have mentors planning to be present. This is club participation not board/officer only. Please remember we are only strong as a club in this endeavor.

While we have mentors listed, newcomers – visitors or members – don't know who they are and may not be comfortable asking for help; the afternoon “learn and turn” would give individuals the opportunity to help new turners without having someone at their home if not comfortable with that as well as help a new person get help without another trip – on either person's part.

The club has three (3) lathes and the offer has been made that one or more lathes (small) might be purchased to help support this opportunity for our club to help teach turners.

As a club we talk about wanting to help give back to our community and help woodturning become something younger people are interested in. That requires participation, commitment and effort on the CLUB'S PART. It is not something that the officers and board members can accomplish.

Please consider these suggestions and talk among the membership as well as with officers and board members so we can reach our goal of teaching turners and growing our organization. We have talked beads of courage participation, nursing home gifts at Christmas, tops and other items for children in hospitals, etc.; we need to put action behind our talk if any of this is to be accomplished. Please provide feedback on this.

2017 Officers and Board of Directors

Officers of NC Woodturners – 2016		
President	Tim Simmons	(828) 726-1599
VP/Program Chair	Jerry Long	(704) 437-2188
Treasurer	Bruce Whipple	(828) 584-0890
Secretary/Journal & Website Editor	Beth Parham	(828) 244-9512

Board of Directors / NC Woodturners		
Last year of 3-year term (thru 2017)	Gene Parham	(828) 294-4001
	Dan Greaser	(704) 325-0222
2nd year of 3-year term (thru 2018)	Bob Tate	(704) 735-2382
	Dorothy Green	(704) 692-4278
1st year of 3-year term: (thru 2019)	Scott Caskey	(704) 735-2382
	Ralph Green	(704) 692-4278

NEXT REGULAR MEETING:

November 11, 2017

WHEN: Second Saturday of each month
10:00 AM – 4:00 PM

LOCATION Klingspor's Woodworking Shop

856 21st Street Drive SE
Hickory, NC 28602

North Carolina Woodturners
c/o Beth Parham
2154 Frye Avenue
Hickory, NC 28602

