



North Carolina WOODTURNER

Journal of the North Carolina Woodturners Association
 A Chapter of the American Association of Woodturners
www.ncwoodturners.com

July 2009

Volume 19, No. 7



John French – Cherry

Inside this issue:

President's Message	2
Membership & Library News	2
Demonstrator Review	2-3
Program Notes	3
Challenge Marathon	4-5
NCW Money Saver \$\$	6
Demonstration Calendar	6
Board of Directors & Mentors List	6
Gallery Photos	7-8



Max Schronce – Chinese Chestnut



The AAW is dedicated to the advancement of woodturning by providing education, information, organization, technical assistance, and publications relating to woodturning. The North Carolina Woodturners Association purpose is to promote an interest in wood turning for persons of all levels, and to encourage membership in, and give support to, the American Association of Woodturners.

President's Message by John Melius

Before we know it, October will be here. I hope many of our members will be attending the North Carolina Woodturning Symposium, October 23-25 in Greensboro.

The schedule of demonstrators and vendors is awesome. Sam McDowell has been busy handling our club's part of the program. BUT, he's going to need some help. Please ask him how you can assist. That's what makes functions like this work. No one person can do everything! If you do agree to help out, Sam and I assure you that there will be plenty of time for you to enjoy the demonstrations and visit the various vendors. Sam is scheduled to be at our July meeting and I've asked that he bring some more registration forms for the Symposium.

For those who have woodturning activities such as selling, teaching, etc., it is very probable that you have no insurance coverage for these "business" ventures. Generally, homeowners policies do not extend coverage to these situations, not for liability or property. As a member of the AAW, you have an outlet for this need. To apply, contact the AAW on line or call John Hill @ 828/645-6633.

I hope to see you on July 11, when Don Olsen will be the demonstrator.

Membership & Library News by Mary Bachand

Membership: Three cheers for the "set-up crew" and five cheers for the faithful "clean-up crew"! You are very special! Please welcome new member Richard Queen, Jr of Iron Station. He was sitting right next to his dad Richard, Sr. We really are a "family group".

Library: Our "Conscientious Renter Awards" go to John DeLazzer and Russell Willis. John couldn't attend our June meeting so he sent money to renew the items that he had out. Russell also couldn't attend so he mailed his rental to me. Thank you both.

We also had "a small miracle" as a book that had been checked out in September of '08 was returned but no money for all of those months. And now for our mystery! I was surprised to notice that "Allan Batty" had checked out "Allen Batty's Master Class". Anyway-someone, the video is overdue.

I bought the DVD, "Turning Outside the Box", from our demonstrator, Beth Ireland. We were also blessed with the results of a "search and rescue" mission by Gene Shook. He had found and previewed some demonstration videos. He even labeled them for your forgetful librarian and he told me that "something" wasn't good on one of them. Of course, I've forgotten what "something" was and which video "it" was on. So, Gene, you can give me "six lashes with a wet noodle" at our July meeting.

These are the "rescued" videos. Please overlook any name misspellings.

Scott Caskey, "Mini Hats"; Morris Schlesinger, "Elbow Hollowing Tool"; Jim Staley, "Ring Master"; Sharon Doughty, "Drop Box"; and this shared one, Gene Shook, "Toys and UFOs" and Jim Moore, "Shop Tools".

Demonstrator Review – Beth Ireland by Mike Mills

Beth Ireland, our June demonstrator, describes herself as a "crazy wacky artist". The terms "crazy" and "wacky" *might* be applicable but the term "artist" is most definitely appropriate to describe her. She has been a woodworker since 1982 and a woodturner since 1989 ... previously she was an illustrator. What she showed us from her portfolio and what she demonstrated was evidence of both her woodworking talent and her artistic abilities.

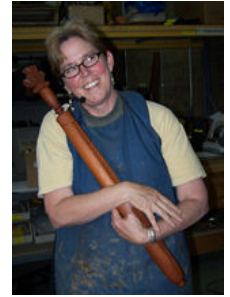
Most of Beth's time is spent doing fairly large architectural pieces ... turnings and carvings for staircases and the like. She showed pictures of some of the custom cabinetry and custom furniture pieces she has made. The band saw box style that she showed us came out of her "rescue" of some of the scraps and leftovers from her other work. The band saw prepares the stock into a simple box and the lathe is used to provide interesting shaping and decoration. Many of the boxes she does in this style are also carved or in other ways decorated artistically.

Before starting her turning, Beth took a few minutes to recommend ways to get the most out of the band saw. She uses a quarter inch, four tooth per inch, hook blade. A finer blade does not cut through the wood as rapidly, while the hook (or offset style) blade clears the chips away and it makes it much easier to get a clean cut. She recommends that you tune your band saw on a regular basis and make sure that you keep the blade guide down as close to the stock as possible.

Demonstrator Review Cont'd – Beth Ireland by Mike Mills

Her recommendation for quickly improving the quality of your work is to do a large volume of what ever you are trying. In this way nothing becomes too precious to risk experimenting (or discarding). Think of something you might want to try and then do it. If it doesn't come out the way you expected... try it again.

It is difficult to try to describe step-by-step the process Beth uses to make these bandsaw boxes. The best suggestion would be to borrow the tape from the club library or get a hold of her DVD. She does a good job of explaining how to get the best results and she suggests a number of ways to devise alternate shapes, decorations and the like. You may begin with stock that is square or rectangular in cross section, of a length, width, and depth of your liking. Just remember to allow enough margin around the center hole you cut in the wood to give you enough room to turn the shape on the lathe. When gluing the pieces back together, Beth recommends Titebond II or Titebond III because of the excellent bond they make on endgrain. When clamping your pieces together do not apply too much pressure. You want to get just a small amount of squeeze out along the joint but you do not want to force all of the glue out.

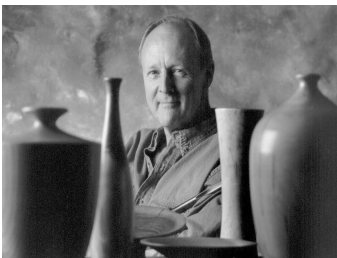


Beth highly recommends the Steb center because of its good holding properties and the ease of making adjustments as she changes the axis along which she turns the object. She uses only a few simple tools ... a spindle roughing gouge, a basic fingernail grind spindle gouge and a more sharply tapered spindle gouge for doing detail work. She also showed some specialty tools that she had made by grinding down the handles of Allen wrenches and simple round steel stock. She likes the longer taper because it gives her a larger bevel area upon which to guide the tool as she is cutting.

To get to the unusual decorations on the tops and bottoms of these essentially rectangular boxes, Beth likes to do multi axis turning followed with hand carving. She does not set these axes with geometric precision, rather she uses her artistic eye with the intent to get an interesting result. Most wood turnings demonstrate significant symmetry in their designs ... Beth's work thrives in its asymmetry.

This was an unusual and very informative demonstration. In much of what we do we are challenged to "think outside the box" but I think her work challenges a woodturner to "think outside the cylinder".

Program Notes – Don Olsen – July 11th – 1pm to 4:00pm



Donald R. Olsen from Lincolnton, N. C., has been "working in the round" since his junior high school shop teacher introduced him to woodturning in '52. Perfecting his craft over the years, Don and his lathe combine form and function to produce one-of-a-kind plates, bowls, urns, vases and wood sculptures.

Don is a member of the American Association of Woodturners (AAW), North Carolina Woodturners Association, the Carolina Mountain Woodturners and a former member of the Chicago Woodturners Association. He is also a member of the Charlotte Art League, the Gaston County Art Guild and the Mooresville Artist Guild. Don has been turning full-time since he moved to North Carolina in '93 where he works with native hardwoods. He has demonstrated at club meetings, industry shows, local symposiums and the AAW National symposiums in '98, '00, '01 and in '05. Don has instructed others in woodturning. His creations have won numerous awards from area art shows and exhibits. He has pieces in collections around the country and has been accepted into international juried exhibits.

Don has hosted an art show in his own community at the Lincoln Cultural Center, Lincolnton, NC.

He has work on display in the K2 Studio gallery in Asheville, NC. His pieces may also be seen by appointment at his home studio at 871 Bethel Church Road, Lincolnton, NC, 28092.

Don would like people to bring their design ideas to the meeting. He plans to lead a discussion on design after some introductory info and examples.

Contact at 704-735-9335 or don@donaldolsen.com.

Website: www.donaldolsen.com



June Challenge Project – Turn a Mini-bowl or Mini-Vessel



February Challenge

Dean Wright – 4 rings



Dean Wright – Ash



JT Barker



Richard Queen Jr. – Black Walnut & Cherry



Richard Queen – Walnut



Greg Crowder



Jim Falowski



Jim Falowski



Max Schronce – Ash



Max Schronce
Poplar



Orville Shook
Poplar



Jim Falowski
Osage Orange



Michael McNeilly



David Fisher



Ric Erkes



Stoney

May Challenge



Walt Farnsworth

May Challenges

June Challenge Project – Turn a Mini-bowl or Mini-vessel

Can YOU Go the Distance In 2009?

Marathoners are those who complete all 12 challenge projects for 2009.

Those who successfully finish the marathon will be awarded a **20# box of sandpaper, a hat or shirt from Klingspor & a \$10 gift certificate from Craft Supplies USA!**

Each month, if you bring in a challenge piece you will receive **1 raffle ticket**

If you bring in 2 challenge pieces that month, you get **2 raffle tickets**

The more challenge pieces you bring in, the more raffle tickets you get! **maximum 3 raffle tickets per meeting**

MARATHON RULES

- 2009 Entries must be turned in 2009!
- Entries must not have been shown before.
- If you miss a month's challenge, you can bring it to next month's meeting.



Orville Shook – Walnut

July Challenge



Harold Lineberger – Cedar Top Hat



September Challenge

Dean Wright – Honey Dippers



John French – Maple



Harold Lineberger – Cedar

2009 Challenge Projects

- * January - Turn a Pen
- * February – Turn a Ring
- * March - Turn a Ring Holder
- * April - Make a Round Skew or Three Point Tool
- * May - Turn a Goblet
- * June - Turn a mini-bowl or mini-vessel
- * July - Turn a Top Hat
- * August - Create an Inside-out turning
- * September - Turn a Honey dipper
- * October - Turn a Letter opener
- * November - Toys for Tots!
- * December - Christmas Decorations

	J	F	M	A	M	J	J	A	S	O	N	D
JT Barker												
Evanna Brening												
Scott Caskey												
Walt Farnsworth												
Jim Falowski												
David Fisher												
John French												
Mark Howell												
Harold Lineberger												
Mike Litaker												
Michael McNeilly												
Jim Miles												
Max Schronce												
Orville Shook												
Stoney Stone												
Dean Wright												

Some helpful links:

http://www.woodturningonline.com/Turning/Turning_projects.html

<http://aroundthewoods.com/three.shtml> (three point tool)

<http://www.hiltonhandcraft.com/woodturningarticles.asp>



November Challenge

Dean Wright – Toy for Tots



You Could Save Our Club Money!

Are you still receiving the NCW newsletter in the mail even though you have internet access? If so, please consider having your name removed from our newsletter mailing list. Our newsletter is available for online viewing at our website, www.ncwoodturners.com. If you have internet access and would like to save the club some money, please ask Barb to remove your name from the newsletter mailing list.

NCW 2009 Demonstration Calendar

- * January 10 – 10am – 4pm – Hands-on am / Sam McDowell demo pm
- * February 14 – Scott Caskey – 1pm – 4pm – Mini Hats
- * March 14 – Joe Ruminski -10am – 4pm
- * April 11 – Frank Penta – 10am – 4pm
- * May 9 – Phil Colson – 10am - 4pm
- * June 13 – Beth Ireland – 1pm - 4:30pm
- * July 11 – Don Olsen – 1pm - 4pm
- * August 8 – John Jordan – 10am – 4pm
- * September 12 – Raymond Overman – 1pm – 4pm – Turned Teapots
- * October 10 – Alan Hollar – 10am – 4pm
- * November 14 – Dave Hout – 10am – 4pm
- * December 12 – Christmas Festival

Want to learn something new about woodturning?

If you are interested in learning new skills, or improving the skills you have, contact one of these NCW members:

- * Scott Caskey (Iron Station, NC)
704-735-2382
- * Greg Crowder (Valdese, NC)
828-874-6927
- * Gene Dampier (Fairview, NC)
828-628-9535
- * Edgar Ingram (Statesville, NC)
704-876-4576
- * Sam McDowell (Statesville, NC)
704-871-9801
- * Ron Mechling (Shelby, NC)
704-487-0506
- * John Melius (Mooresville, NC)
704-663-0757
- * Jim Miles (Cornelius, NC)
704-661-0600
- * Don Olsen (Lincolnton, NC)
704-735-9335

... or see what's offered at one of these Woodturning Schools

Arrowmont School of Arts and Crafts
Gatlinburg, TN
865-436-5860
(www.arrowmont.org)

John C. Campbell Folk School
Brasstown, NC
1-800-FOLK SCH
(www.folkschool.com)

If you want to volunteer as a mentor, please contact Barb Ward with your information for the newsletter.



NORTH CAROLINA WOODTURNER

Journal of the North Carolina Woodturners Association
Published Monthly by the

NORTH CAROLINA WOODTURNERS ASSOCIATION
296 Laurel Park Place, Hendersonville, NC 28791

OFFICERS

President:
John Melius (704) 663-6444 ext2

Vice President:
Greg Crowder (828) 874-6927

Treasurer:
Gary Ritchie (704) 482-8090

Secretary:
Mary Bachand (828) 696-8372

Programs Chairman:
Greg Crowder (828) 874-6927

Journal Editor:
Barb Ward (704) 480-8931

BOARD OF DIRECTORS

Evanna Brening (704) 740-8026
(Term exp. 2010)

Scott Caskey (704) 740-7630
(Term exp. 2009)

Jim Moore (828) 478-9586
(Term exp. 2009)

Sharon Lochaby (704) 825-8773
(Term exp. 2009)

Michael McNeilly (704) 660-7938
(Term exp. 2011)

Gayle (Stoney) Stone (704) 662-9219
(Term exp. 2011)

Past President: Sam McDowell (704) 871-9801

Journal Editor: Barb Ward, 2103 Windermere Lane, Shelby, NC 28150
(704) 480-8931 bw@southernriskservices.com
Internet: www.ncwoodturners.com

Gallery Photos by Scott Caskey



Brad Indicott—Cherry Burl



Orville Shook—assorted wood



Gary Ritchie—maple & woven glass bead ornaments



David Fisher—Ambrosia Maple



David Fisher—Ambrosia Maple



John Melius



Barb Ward—Cherry Burl platter

Gallery Photos by Scott Caskey



John Melius



John Melius



John Melius



Ric Erkes



Ric Erkes



Ric Erkes



Remember, our meetings are always at 1:00pm on the second Saturday of the month at Klingspor's Woodworking Shop in Hickory unless otherwise noted in the Journal.

NEXT MEETING: July 11th – 1:00pm – 4:00 pm

visit us on the web at www.ncwoodturners.com